

Loss of the High-Affinity Pentamidine Transporter Is Responsible for High Levels of Cross-Resistance between Arsenical and Diamidine Drugs in African Trypanosomes^[S]

Daniel J. Bridges, Matthew K. Gould, Barbara Nerima, Pascal Mäser, Richard J. S. Burchmore, and Harry P. de Koning

Institute of Biomedical and Life Sciences, Division of Infection and Immunity, University of Glasgow, Glasgow, UK (D.J.B., M.K.G., R.J.S.B., H.P.d.K.), and Institute of Cell Biology, University of Bern, Switzerland (B.N., P.M.)

Received October 2, 2006; accepted January 16, 2007

ABSTRACT

Treatment of many infectious diseases is under threat from drug resistance. Understanding the mechanisms of resistance is as high a priority as the development of new drugs. We have investigated the basis for cross-resistance between the diamidine and melaminophenyl arsenical classes of drugs in African trypanosomes. We induced high levels of pentamidine resistance in a line without the *tbat1* gene that encodes the P2 transporter previously implicated in drug uptake. We isolated independent clones that displayed very considerable cross-resistance with melarsen oxide but not phenylarsine oxide and reduced uptake of [³H]pentamidine. In particular, the high-affinity pentamidine transport (HAPT1) activity was absent in the pentamidine-adapted lines, whereas the low affinity pentamidine transport (LAPT1) activity was unchanged. The parental *tbat1*^{−/−} line was sensitive to lysis by melarsen oxide, and this process was inhibited by low concentrations of pentamidine,

indicating the involvement of HAPT1. This pentamidine-inhibitable lysis was absent in the adapted line KO-B48. Likewise, uptake of the fluorescent diamidine 4',6-diamidino-2-phenylindole dihydrochloride was much delayed in live KO-B48 cells and insensitive to competition with up to 10 μM pentamidine. No overexpression of the *Trypanosoma brucei brucei* ATP-binding cassette transporter TbMRPA could be detected in KO-B48. We also show that a laboratory line of *Trypanosoma brucei gambiense*, adapted to high levels of resistance for the melaminophenyl arsenical drug melarsamine hydrochloride (Cymelarsan), had similarly lost TbAT1 and HAPT1 activity while retaining LAPT1 activity. It seems therefore that selection for resistance to either pentamidine or arsenical drugs can result in a similar phenotype of reduced drug accumulation, explaining the occurrence of cross-resistance.

Trypanosoma brucei subsp. are protozoan parasites that cause human African trypanosomiasis (i.e., sleeping sickness) and the corresponding veterinary condition in livestock. Treatment of both the human and livestock diseases depends on a very small set of mostly very old drugs. The first-line treatment for the late stage of both West African and East African human African trypanosomiasis is melarsoprol, an organoarsenic compound of the melaminophenyl arsenical class, introduced in 1949 (Jannin and Cattand,

2004). A similar but water-soluble melaminophenyl arsenical, melarsamine hydrochloride (Cymelarsan), is increasingly used for animal trypanosomiasis. Early-stage West African sleeping sickness is routinely treated with the diamidine drug pentamidine, introduced in 1937 (Jannin and Cattand, 2004). The corresponding widely used veterinary diamidine is diminazene aceturate (Berenil). The only new trypanocide to be developed in recent decades, DB75, is also a diamidine and currently in clinical trials as an orally available prodrug.

It has been known for decades that cross-resistance between melaminophenyl arsenicals and diamidine drugs sometimes occurs (Fulton and Grant, 1955; Williamson and Rollo, 1959), but cross-resistance patterns can be unpredictable (Williamson, 1970). Kaminsky and Mäser (2000) distin-

This work was funded by the Wellcome Trust.

Article, publication date, and citation information can be found at <http://molpharm.aspetjournals.org>.
doi:10.1124/mol.106.031351.

[S] The online version of this article (available at <http://molpharm.aspetjournals.org>) contains supplemental material.

ABBREVIATIONS: LAPT1, low-affinity pentamidine transporter; HAPT1, high-affinity pentamidine transporter; ABC, ATP-binding cassette transporter; TbAT1, *Trypanosoma brucei* adenosine transporter 1; MRPA, multidrug resistance protein A; TbMRPA, *Trypanosoma brucei* multidrug resistance protein A; DAPI, 4',6-diamidino-2-phenylindole dihydrochloride; DIC, differential interference contrast; TES, *N*-tris(hydroxymethyl)-methyl-2-aminoethanesulfonic acid; PBS, phosphate-buffered saline; TBS, Tris-buffered saline; RT, room temperature; PFR, paraflagellar rod protein; WT, wild-type.

guished six distinct resistance profiles in *Trypanosoma brucei brucei* laboratory strains and field isolates, presumably an indication that multiple factors determine (the level of) resistance to the various drugs. They also noted that some resistance profiles seem to be associated with either field or laboratory-induced resistance.

Some progress has been made in understanding drug resistance mechanisms in trypanosomes. The important role of the *T. brucei* AT1/P2 purine transporter in the accumulation of melaminophenyl arsenical compounds and diamidines is now well understood (Carter and Fairlamb, 1993; Mäser et al., 1999; De Koning, 2001a; Delespau and De Koning, 2007). The loss of TbAT1/P2 alone was shown to be sufficient for high levels of diminazene aceturate resistance in *T. brucei brucei* and *Trypanosoma evansi* (De Koning et al., 2004; Witola et al., 2004). However, the deletion of the *TbAT1* gene produced only minor loss of sensitivity to pentamidine and melaminophenyl arsenicals (Matovu et al., 2003). Thus, the action of some diamidines relies (almost) exclusively on TbAT1/P2 for access to intracellular targets, whereas other diamidines, as well as melaminophenyl arsenicals, have at least one additional route of entry.

We have shown previously that adenosine-insensitive uptake of [³H]pentamidine in *T. brucei brucei* is mediated by two discrete transport activities: a low-affinity pentamidine transporter [LAPT1 (De Koning and Jarvis, 2001)] and a high-affinity pentamidine transporter [HAPT1 (De Koning, 2001b)]. Although this seems to explain why clinical pentamidine resistance has not established itself, despite the many decades of intensive use (for review, see Bray et al., 2003), it was not clear whether high levels of pentamidine resistance might ensue with the consecutive loss of TbAT1/P2 and either HAPT1 or LAPT1. Nor is it yet clear why the *tbat1*^{-/-} line did not display an appreciable level of resistance to melaminophenyl arsenical drugs (Matovu et al., 2003). It has been argued that higher levels of arsenical resistance in trypanosomes could be the result of the (over)-expression of an ABC-type transporter of the multidrug resistance type, TbMRPA. Overexpression of this transporter in *T. brucei brucei* does induce 10-fold resistance to melarsoprol in vitro (Shahi et al., 2002). Arsenical resistance attributed to loss of TbAT1/P2 and overexpression of TbMRPA were shown to be additive (Lüscher et al., 2006). However, TbMRPA overexpression did not lead to arsenical resistance in vivo, and TbMRPA overexpression could not be demonstrated in melarsoprol-resistant trypanosome isolates from patients with sleeping sickness (Alibu et al., 2006).

In the current article, we address the outstanding questions concerning diamidine and arsenical resistance using *Trypanosoma brucei* lines adapted to high levels of pentamidine and cross-resistant to melaminophenyl arsenicals. We now provide a model for the biochemical basis of cross-resistance between melaminophenyl arsenicals and the diamidines. The model predicts that HAPT1, together with TbAT1, may be a key determinant for arsenical resistance in African trypanosomes, providing a hypothesis that should now be validated on clinical isolates from patients refractory to melarsoprol.

Materials and Methods

Trypanosomes and Cultures. Growth of bloodstream trypanosomes in culture was performed using HMI-9 medium (BioSera Ltd.,

East Sussex, UK) (Hirumi and Hirumi, 1989) supplemented with 2 mM β -mercaptoethanol and 10% fetal bovine serum at 37°C, in a 5% CO₂ atmosphere. For transport assays, trypanosomes were grown in adult female Wistar rats and isolated from infected blood as described previously (De Koning and Jarvis, 1997). The cloned *Trypanosoma brucei gambiense* type 2 stock STIB 386 and the derived melarsamine hydrochloride-resistant clone 386MelCy^R (hereafter called 386Ms and 386Mr) were a kind gift of Professor C.M.R. Turner (University of Glasgow). The adaptation of 386Ms to high levels of melarsamine hydrochloride has been described elsewhere (Scott et al., 1996). The *T. brucei brucei* clone s427 (MiTat 1.2/221) was used to derive the *tbat1*^{-/-} line (Matovu et al., 2003) and the pentamidine-adapted clonal line WT-D24. *tbat1*^{-/-} was also adapted to higher levels of pentamidine resistance, generating the clonal lines KO-B6, KO-D6, KO-B48, and KO-D48. Clonal populations were generated by limiting dilution. Cell densities were assessed using a hemocytometer and phase-contrast microscope. The New York line of *T. brucei brucei* (Wirtz et al., 1999) and the derived MRPA overexpressing line NY-mrpa have been described previously (Lüscher et al., 2006). Overexpression was induced (NY-mrpa⁺) or repressed (NY-mrpa⁻) by the inclusion or omission, respectively, of 1 μ g/ml tetracycline in the culture medium.

Transport Assays. Transport assays were performed exactly as described previously (Wallace et al., 2002). In brief, trypanosomes were isolated from blood taken from infected Wistar rats by DEAE-52 (Whatman, Maidstone, UK) anion exchange chromatography, washed into assay buffer, and resuspended at $\sim 2 \times 10^8$ cells/ml at room temperature. In a minority of cases, trypanosomes for transport assays were cultured in complete HMI-9 medium. Aliquots (100 μ l) of bloodstream trypanosomes in assay buffer were mixed with an equal volume of buffer containing radiolabel and sometimes inhibitor, at twice the final concentration, initiating transport. Transport was terminated by the addition of 1 ml of ice-cold buffer containing unlabeled permeant at a saturating concentration (2 mM for pentamidine) followed by rapid centrifugation through an oil layer, separating cells from radiolabel not internalized. Transport values are expressed as picomoles per 10⁷ cells per second.

Drug Sensitivity Assays. Drug sensitivity was determined using the dye resazurin (Alamar blue) exactly as described previously (Wallace et al., 2002) in a protocol adapted from Ráz et al. (1997). In brief, drugs were serially diluted in 100 μ l of complete HMI-9 media across a 96-well microtiter plate. Unless limited by solubility, the top drug concentration used was 1 mM. Cultures of bloodstream-form trypanosomes were grown to a maximum density of 2×10^6 cells/ml and diluted to 2×10^5 cells/ml with complete HMI-9 medium, of which 100 μ l was added to all wells. Plates were then incubated for 48 h at 37°C in a 5% CO₂ atmosphere, before the addition of 20 μ l of 5 mM resazurin (Sigma, St. Louis, MO) solution in PBS, pH 7.4. Plates were incubated for an additional 24 h at 37°C, before fluorescence was measured using a LS 55 luminescence spectrometer (λ_{ex} = 530 nm, λ_{em} = 590 nm; PerkinElmer Life and Analytical Sciences, Boston, MA).

Fluorescence Microscopy. *T. brucei* were pelleted (600g, 10 min at room temperature) before being resuspended in fresh HMI-9 media containing 10 μ M concentrations of stilbamidine, 4',6-diamidino-2-phenylindole dihydrochloride (DAPI), DB75, or Hoechst 33342 solution at room temperature and assessed by fluorescence microscopy. Glass slides of the culture were prepared and examined using differential interference contrast (DIC) and fluorescence microscopy (λ_{ex} = 365 nm; λ_{em} = 445 nm) on an Axioplan 2 imaging microscope (Carl Zeiss GmbH, Jena, Germany) using Volocity v. 3.7 software (Improvision, Coventry, UK). Where necessary, parasites were fixed by incubating in PBS containing 2.5% glutaraldehyde for 20 min. Cells were then washed in 0.05 M glycine in PBS before being mounted on slides.

Lysis Assays. The lysis assays were performed essentially as described by Fairlamb et al. (1992), using bloodstream trypanosomes of *tbat1*^{-/-} and KO-B48 grown in vitro. They were washed and

resuspended in fresh HMI-9 medium with 10% fetal calf serum at $\sim 2 \times 10^7$ cells/ml, which was transferred to 1-ml cuvettes. Absorption was monitored, at 750 nm, at 30-s intervals. Melarsen oxide or phenylarsine oxide were added after 15 min to allow the recording of a short baseline. Up to 16 cultures were monitored simultaneously, using two HP8453 spectrophotometers (Hewlett-Packard), in the presence or absence of low concentrations of pentamidine, which by themselves did not affect cell viability or motility over the course of the experiment.

Preparation of Plasma Membrane Protein-Enriched Fractions. *tbat1*^{-/-} and KO-B48 plasma membrane-enriched samples were generated by a modification of the procedure described by Voorheis et al. (1979). In brief, bloodstream-form trypanosomes were cultured in vivo in adult female Wistar rats infected by i.p. injection. Blood was collected at peak parasitemia under terminal anesthesia, and parasites were isolated as for transport assays. Cells were then osmotically stressed by addition of water (at 4°C), and swelling was monitored by phase-contrast microscopy until a spherical morphology had been achieved. Cells were then homogenized in an AO Cell Disruptor (Stansted Fluid Power, Stansted, UK), in the presence of protease inhibitors. The homogenate was then returned to a normal osmotic potential through the addition of 3 M KCl to a final concentration of 140 μ M, before pelleting the cells. Cells were then treated with 240 units of DNase in TES buffer (20 mM TES, 150 mM KCl, 5 mM MgCl₂, and 1 mM 2-mercaptoethanol, pH 7.4), for 5 min at 20°C. The reaction was terminated by the addition of 5 volumes of TES buffer (20 mM TES, 150 mM KCl, 1 mM EDTA, and 1 mM 2-mercaptoethanol, pH 7.4). Cells were pelleted and then re-suspended in 40% sucrose before being layered on a linear 40 to 60% sucrose gradient (in TES buffer). Samples were then centrifuged for 3 h at 70,000g on a SW28 rotor (Beckman Coulter, Fullerton, CA). The most prominent dense white band, corresponding to the plasma membrane fraction, was isolated and washed twice in TES buffer to remove sucrose, before being aliquoted and stored in TES buffer at -80°C. All procedures were performed at 4°C unless otherwise stated.

Western Blotting. Samples for Western blotting were plasma membrane preparations (described under *Preparation of Plasma Membrane Protein-Enriched Fractions*) or whole-cell protein extracts prepared from 2×10^7 cells, washed in PBS, and flash-frozen in dry ice/ethanol. Samples solubilized in standard Laemmli buffer (60°C for 10 min) were loaded onto a 10% SDS polyacrylamide gel and run until the bromophenol blue dye front reached the end of the gel. Proteins were then transferred onto a nitrocellulose membrane (Hybond ECL; GE Healthcare, Little Chalfont, Buckinghamshire, UK) at 4°C in MeOH Tris-glycine buffer. Blots were incubated in blocking solution (TBS-Tween 20 containing 5% milk powder) for 1 h at room temperature (RT). Primary antibodies raised to MRPA, kindly provided by Christine Clayton, University of Heidelberg, were diluted 1:500 in blocking solution (TBS-Tween 20 containing 5% milk powder) and incubated with the blot for 1.5 h at RT. Unbound/excess antibodies were removed by washing in TBS-Tween 20 (2×10 min) and then TBS (10 min). Secondary peroxidase-conjugated anti-

mouse immunoglobulin antibodies (Dako Denmark A/S, Glostrup, Denmark) were then incubated with the blot (diluted 1:1000) in blocking solution at RT for 1 h. Unbound secondary antibodies were removed by washing (as with primary antibodies). Bound antibodies were detected using the ECL Plus western blotting detection System (GE Healthcare) according to the manufacturer's instructions. For normalization, the blot was stripped and reprobed using a polyclonal antiserum against paraflagellar rod protein (PFR; diluted 1:1000) as described previously (Schlaeppli et al., 1989) and a secondary peroxidase-conjugated anti-rat immunoglobulin antibody (diluted 1:10,000) (Dako Denmark A/S).

Infectivity of Pentamidine-Adapted *T. brucei brucei* Lines in Mice. Groups of three to five ICR mice (Harlan UK Ltd., Bicester, Oxon, UK) were infected with 10^4 trypanosomes in 200 μ l of full HMI-9/fetal calf serum culture medium by i.p. injection. In some cases, the mice had been immunosuppressed by treatment with cyclophosphamide (200 mg/kg cyclophosphamide in water, injected i.p.) 24 h before infection. Parasitemia was estimated daily by the rapid "matching" method (Herbert and Lumsden, 1976) from examinations of wet blood films on microscope slides, collected by tail prick, using a phase-contrast microscope. Mice reaching a parasitemia of antilog 8.4 (2.5×10^8 cells/ml blood) or over were euthanized by inhalation of a rising concentration of CO₂.

Results

Induction of High-Level Pentamidine Resistance in *T. brucei brucei*. To maximize the likelihood of the successful generation of drug-resistant lines, we applied selection pressure to four separate cultures from each of the two parental strains, s427 (WT) and the isogenic clone *tbat1*^{-/-}, the latter of which has been derived from the former by deletion of both copies of the *TbAT1* gene (Matovu et al., 2003). From these 8 cultures initially established, three (WT-D, KO-B, and KO-D) went on to develop a stable drug resistance phenotype after several months of selection in increasing pentamidine concentrations. Two clones were derived from each of these lines: one that tolerated intermediate levels of pentamidine (clones WT-D3, KO-B6, and KO-D6) and one that tolerated high levels of pentamidine (clones WT-D24, KO-B48, and KO-D48), compared with the parental strains (Fig. 1A). The strains displaying the highest levels of resistance were able to survive in pentamidine concentrations 80-fold higher than those tolerated by their parental strain. It was also observed that resistance acquisition was nonlinear over time and seemed to correlate best to an exponential model, with correlation coefficients between 0.87 and 0.93 (plots not shown). The wild-type strain, in particular, took many passages to acquire any pentamidine resistance but subsequently adapted to very significant levels of resistance in two discrete steps.

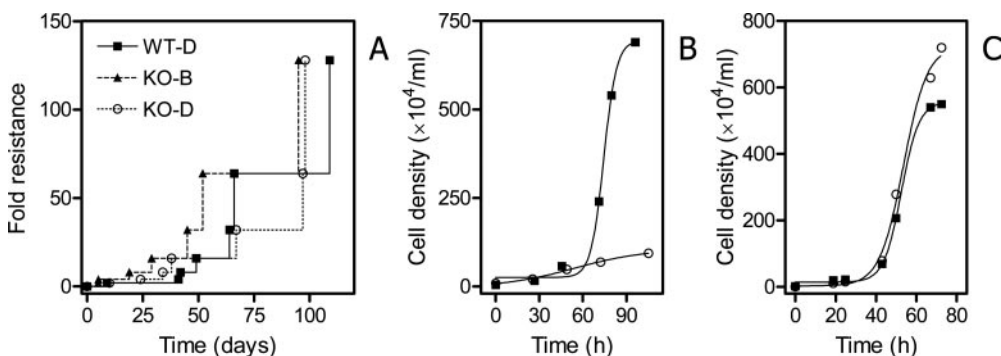


Fig. 1. Induction of pentamidine resistance in *T. brucei brucei*. A, development of resistance over time in three independent clones. B and C, growth of KO-B48 line in the presence (○) or absence (■) of 80 nM pentamidine in the growth medium. Frame B, shortly after passage to 80 nM pentamidine; frame C, after 2 month in 80 nM pentamidine.

During each round of selection, it was observed that the initial acquisition of resistance in the presence of drug was associated with a reduced growth phenotype (Fig. 1B), in terms of both doubling time and maximum cell density. For all the lines eventually selected, this was reversed to a parental growth phenotype by maintaining the same selection pressure for an additional period of time (Fig. 1C). Once the resistance phenotype was well established, removal of pentamidine from the media had no effect on growth, and the resistance phenotype was stable for at least 3 months in the absence of drug pressure.

Cross-Resistance Profile of KO-B48 and KO-D48. We have previously reported the cross-resistance phenotype of the *tbat1*^{-/-} strain (Matovu et al., 2003), which displayed high levels of resistance to diminazene but only minor loss of sensitivity to pentamidine and the melaminophenyl arsenical drugs melarsoprol, melarsen oxide, and melarsamine hydrochloride. Using the same protocol based on the reduction of the dye Alamar blue (resazurin), we have repeated these experiments with WT, *tbat1*^{-/-}, KO-B48, and KO-D48 in parallel. The results are presented as a series of bar graphs in Fig. 2. The phenotypes of KO-B48 and KO-D48 were very similar. Compared with the WT strain, a large increase in pentamidine resistance was observed, reaching an average 130- and 82-fold resistance in KO-B48 and KO-D48, respectively ($n = 8$; Fig. 3). Resistance to melarsen oxide was also markedly increased in KO-B48 and KO-D48 (15.4- and 10.7-fold, respectively, relative to WT; Fig. 2B). Sensitivity to propamidine and stilbamidine, already reduced in the KO strain, was modestly decreased further in KO-B48 and KO-D48 (Fig. 2, C and D), whereas resistance to diminazene

aceturate was not further increased in the pentamidine resistant lines (Fig. 2E). Sensitivity to phenylarsine oxide, which freely diffuses across membranes, was identical in all the lines (Fig. 2E), showing that the resistance phenotype was most likely associated with changes in drug uptake. A table with exact sensitivities of all four trypanosome lines to all six drugs is included as on-line only Supplementary Data.

Pentamidine Transport in Pentamidine-Resistant Trypanosome Lines. Transport of 0.5 μ M [³H]pentamidine was drastically reduced in both KO-B48 and KO-D48, compared with the parental *tbat1*^{-/-} line (Fig. 4A,B), by 74 and 68%, respectively. To exclude the possibility that culture conditions had somehow played a role in the reduced uptake rates, the experiment was repeated with *tbat1*^{-/-} and KO-B48 cells grown in Wistar rats (Fig. 4C). The result clearly demonstrates that pentamidine transport in the adapted lines is severely impaired yet remains saturable (Figs. 4C and 5). We also confirmed that transport in KO-B48 was not generally impaired, using [³H]2-deoxyglucose. Uptake of [³H]2-deoxyglucose by KO and KO-B48 cells was determined in three independent experiments, each performed in triplicate, and found to be linear over 30 min, completely saturated by 10 mM 2-deoxyglucose, and not significantly different between the two trypanosome lines (Supplementary Data Fig. 1).

Pentamidine transport in the *tbat1*^{-/-} strain is mediated by two transporters, HAPT1 and LAPT1 (Matovu et al., 2003). To determine whether one or both of these transporters were affected in the highly resistant line KO-B48, a series of transport assays was performed at 15 nM [³H]pentamidine. This very low concentration of radiolabel is necessary to

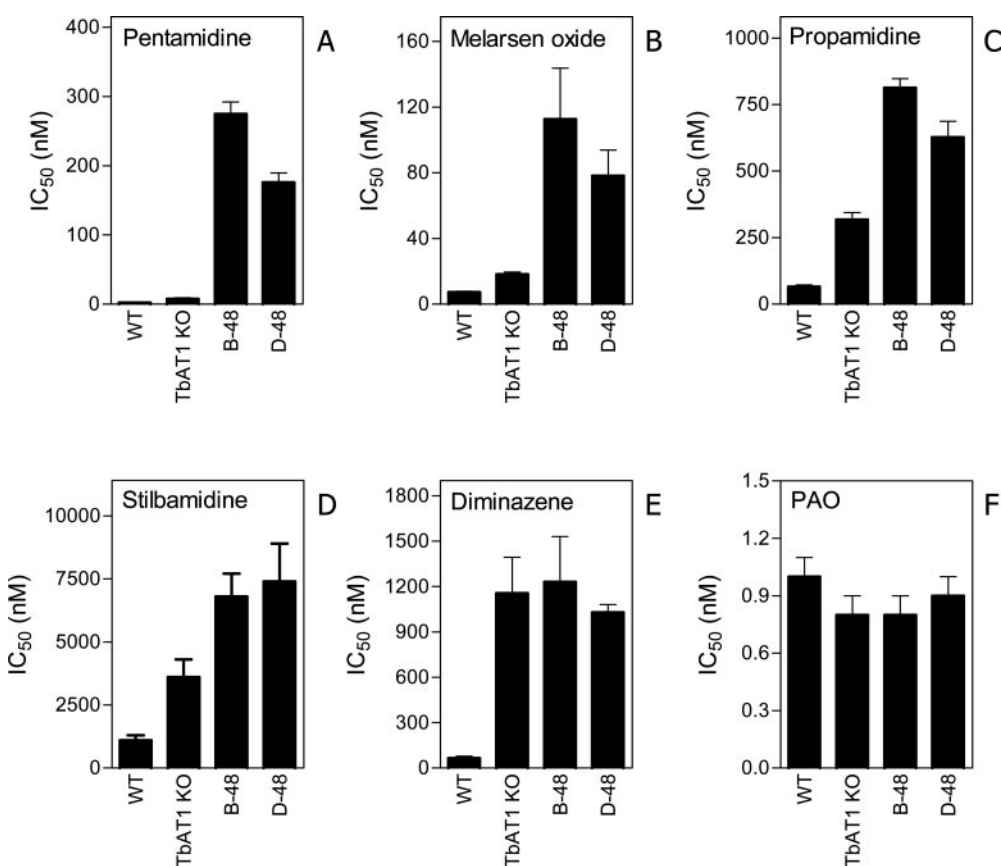


Fig. 2. Drug sensitivity profile of four *T. brucei brucei* clones. A, pentamidine. B, melarsen oxide. C, propamidine. D, stilbamidine. E, diminazene aceturate. F, phenylarsine oxide (PAO). Error bars indicate S.E. All values are the average of between 3 and 11 determinations. A table with the exact values and number of replicates is available as on-line only supplementary material.

avoid saturating HAPT1 and to obtain a biphasic inhibition curve showing both the high-affinity (but low-capacity) HAPT1 activity and the low-affinity (but high-capacity) LAPT1 activity in the WT s427 and *tbat1*^{-/-} strains (De Koning, 2001b; Matovu et al., 2003). The presence of a high-affinity pentamidine transport activity could not be confirmed in KO-B48: it was either absent altogether or its transport capacity was very significantly reduced (Fig. 5A), although pentamidine transport was clearly biphasic in the control WT strain (Fig. 5B). In contrast, the low-affinity transporter LAPT1 seemed completely unchanged compared with parental strains (Fig. 5, A and C): K_m and V_{max} values were identical to those previously reported for the parental line s427 (Table 1).

Arsenical-Induced Lysis in *tbat1*^{-/-} Is Mediated by HAPT1 and Absent in KO-B48. Lysis of trypanosomes, induced by arsenical drugs, can be monitored spectroscopically at 750 nm (Fairlamb et al., 1992) and was used to demonstrate that melaminophenyl arsenicals enter *T. brucei brucei* principally through P2 (Carter and Fairlamb, 1993). We have previously used this technique to show that in *tbat1*^{-/-} cells, a secondary, slower phase of melarsen oxide-induced lysis can be discerned and displays the pharmacological profile of HAPT1 (Matovu et al., 2003). The results depicted in Fig. 6A confirm this observation. Although melaminophenyl arsenicals act more slowly on *tbat1*^{-/-} than on WT cells (Matovu et al., 2003), 10 μ M melarsen oxide induced cell lysis in *tbat1*^{-/-} cells in approximately 50 min (trace a), but coadministration of as little as 1 μ M pentamidine with 10 μ M melarsen oxide substantially delayed cell lysis (trace b). In contrast, the same concentration of pentamidine had no

influence on lysis induced by phenylarsine oxide (traces c and d), which rapidly diffuses across membranes (Carter and Fairlamb, 1993).

In KO-B48 cells, melarsen oxide-induced lysis is already much delayed compared with *tbat1*^{-/-} cells (trace a), and 1 μ M pentamidine has no further effect (trace b), demonstrating the absence of HAPT1 activity. Again, coincubation with 1 μ M pentamidine had no effect on lysis induced by phenylarsine oxide (traces c and d), and the timing of phenylarsine-induced lysis was identical in both strains.

Assessment of Pentamidine Transporters Using Fluorescent Microscopy. The rate of entry of fluorescent diamidines, monitored by fluorescence-activated cell sorting or fluorescence microscopy, can be used as a probe to investigate changes in membrane permeability and cross-resistance patterns (Frommel and Balber, 1987; Stewart et al., 2005). Like Frommel and Balber (1987), we used 4',6-diamidino-2-phenylindole dihydrochloride as a fluorescent substitute for pentamidine. This was possible given the fact that DAPI displays considerable affinity for all three pentamidine transporters. K_i values are $0.67 \pm 0.12 \mu$ M (TbAT1/P2, $n = 3$), $26 \pm 6 \mu$ M (HAPT1, $n = 3$), and $20 \pm 6 \mu$ M (LAPT1, $n = 5$) (data not shown). The highest affinity was for TbAT1/P2; nonetheless, this transporter did not primarily mediate DAPI transport. Figure 7 shows that the rate of development of fluorescence was not clearly different in live long-slender WT s427 or *tbat1*^{-/-} cells. By 5 min, fluorescence was clearly observed, and by 10 min, staining of both nucleus and kinetoplast was very intensive. In contrast, KO-B48 cells showed only faint fluorescence in both organelles after 20 min. Even after 60 min, fluorescence was much less than that observed in the

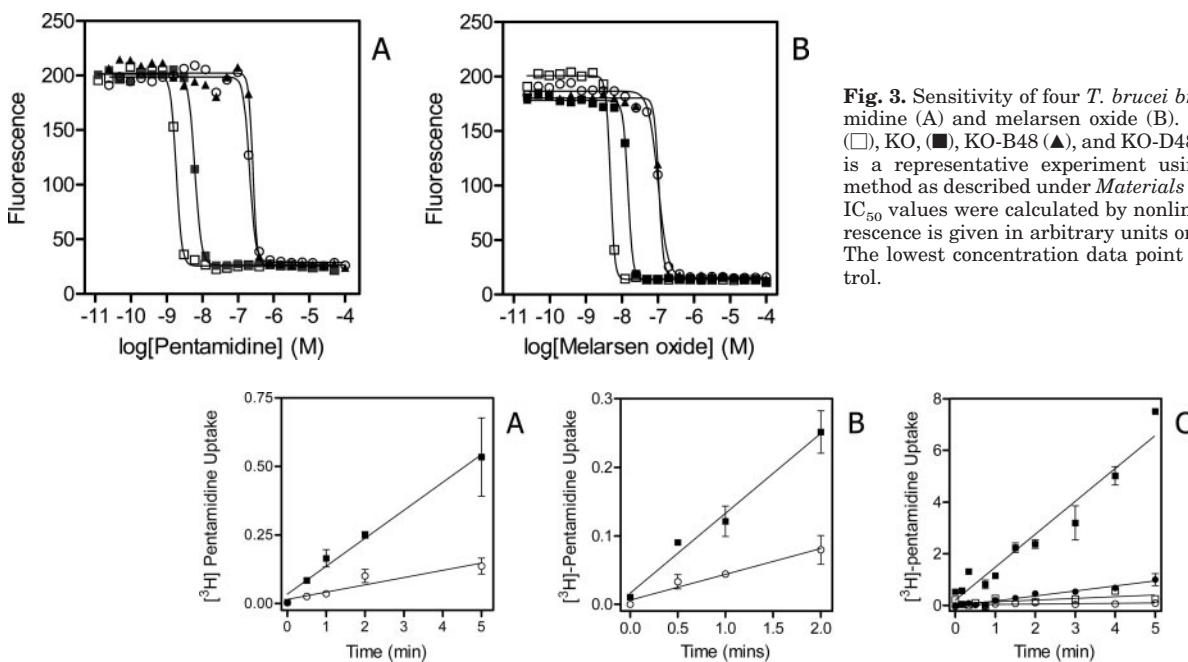


Fig. 4. Transport of 0.5 μ M [3 H]pentamidine in resistant trypanosome lines. A, uptake of pentamidine by KO-B48 (\circ) or the parental *tbat1*^{-/-} strain (\blacksquare) grown in culture in the absence of pentamidine pressure and the two strains were assayed simultaneously. Lines were calculated by linear regression. B48, $r^2 = 0.89$, slope = 0.027 ± 0.005 ; *tbat1*^{-/-}, $r^2 = 0.99$, slope = 0.10 ± 0.006 . B, uptake of pentamidine by KO-D48 (\circ) or the parental *tbat1*^{-/-} strain (\blacksquare) grown in culture in the absence of pentamidine pressure and the two strains were assayed simultaneously. Lines were calculated by linear regression. D48, $r^2 = 0.97$, slope = 0.038 ± 0.005 ; *tbat1*^{-/-}, $r^2 = 0.99$, slope = 0.17 ± 0.01 . C, uptake of [3 H]pentamidine by KO-B48 (\circ , \bullet) or the parental *tbat1*^{-/-} strain (\blacksquare , \blacksquare) grown in Wistar rats, in the presence (open symbols) or absence (filled symbols) of 1 mM nonlabeled pentamidine. Lines were calculated by linear regression. Values in the absence of pentamidine were as follows: B48, $r^2 = 0.97$, slope = 0.0032 ± 0.0001 ; *tbat1*^{-/-}, $r^2 = 0.94$, slope = 0.021 ± 0.002 . Pentamidine uptake is expressed as picomoles per 10^7 cells. Symbols represent average of triplicate determinations; error bars are S.E., when not shown fall within the symbol.

other cell lines at 10 min (Fig. 7). Care was taken to exclude any dead cells from the observations, as they accumulated DAPI very rapidly, presumably as a result of loss of membrane integrity.

It thus seems that the rate of DAPI uptake is much reduced in KO-B48 cells, relative to the parental line *tbat1*^{-/-}. To assess whether this was caused by the loss of HAPT1 or LAPT1, the development of fluorescence was again monitored in live KO-B48 cells incubated with DAPI alone or in the presence of either 10 μ M pentamidine (saturates HAPT1)

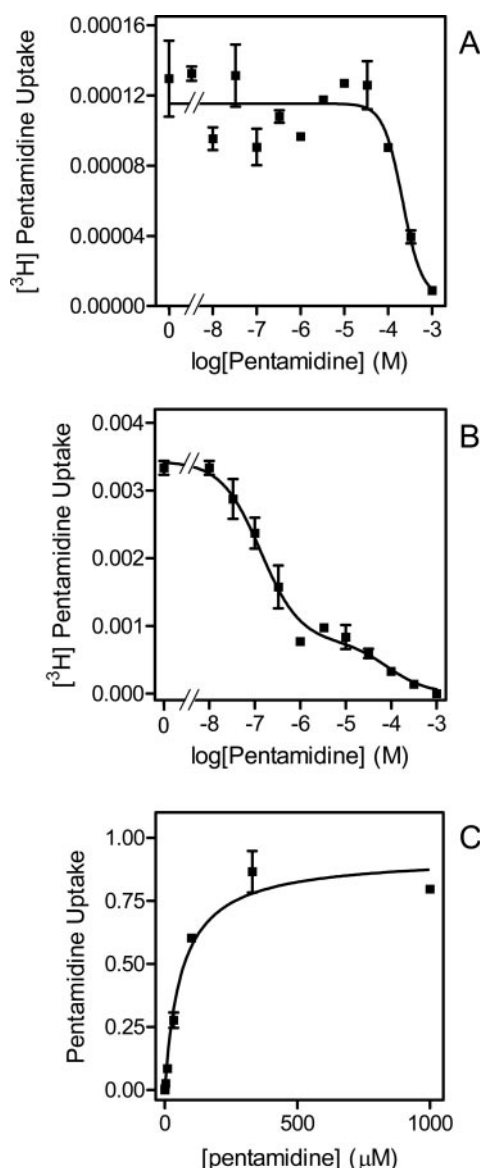


Fig. 5. Pentamidine uptake in *Trypanosoma brucei brucei* clone KO-B48 is mediated only by a low-affinity transporter. A, transport of 0.015 μM $[^3\text{H}]$ pentamidine in KO-B48 over 2.5 min was assayed in the presence or absence of increasing concentrations of unlabeled pentamidine. The data were fitted to a sigmoid curve using nonlinear regression. B, uptake of 0.04 μM $[^3\text{H}]$ pentamidine over 60 s in LS bloodstream forms of s427 WT was assessed in the presence of a constant concentration of 1 mM adenosine and a variable concentration of unlabeled pentamidine. The data were fitted to a "two-site competition" equation in the GraphPad Prism 4.0 software package. IC_{50} values were 0.13 and 85 μM for the high- and low-affinity components, respectively. C, conversion of the inhibition data in frame A to a Michaelis-Menten plot. All data shown are the average of triplicate determinations; error bars are S.E. Pentamidine uptake is expressed as picomoles per 10^7 cells per second.

or 1 mM pentamidine (saturates both transporters). The results in Fig. 8A show accumulation in live cells at 25, 45, and 60 min of incubation with the fluorophore. It is clear that the lower concentration of pentamidine does not delay the rate of DAPI accumulation compared with the no-drug control, whereas 1 mM pentamidine practically abolishes DAPI fluorescence over 60 min. The P-glycoprotein inhibitor verapamil (50 μM) did not affect the accumulation rate of DAPI (Fig. 8A). Using live, motile trypanosomes does not allow the overlay of DIC and fluorescent images and causes imperfect focus on the fluorescence micrographs. At the termination of the experiment, at 60 min, cells were therefore fixed with glutaraldehyde. The higher quality DIC, fluorescence, and overlay images shown in Fig. 8B confirm the conclusions of the timed/real time experiment depicted in Fig. 8A.

The Drug Efflux Transporter TbMRPA Is Not Over-expressed in KO B-48. To verify whether the cross-resistance phenotype of KO B-48 can be partly explained through the elevated expression of TbMRPA, an ABC transporter of the multidrug resistance (mdr) family, plasma membrane-enriched extracts of *tbat1*^{-/-} and KO B-48 were run on one-dimensional SDS polyacrylamide gels and transferred to nitrocellulose for Western blotting with anti-TbMRPA antiserum. Protein preparations from tetracycline-induced and noninduced NY-mrpa cells and parental NY trypanosomes were analyzed in parallel as control cells. MRPA was clearly present in NY-mrpa⁺ cells but could not be detected in any of the other lines (Fig. 9A). In contrast, the presence of PFR could easily be demonstrated in each of the preparations (Fig. 9B).

Infectivity of the KO-B48 and KO-D48 Lines. During in vivo culturing it was observed that infectivity of both KO-B48 and KO-D48 lines was much reduced compared with WT and *tbat1*^{-/-} lines. To assess this systematically, groups of five mice were infected with 10^4 *T. brucei brucei* organisms from *tbat1*^{-/-} and each of the derived pentamidine resistant lines. In both KO-B6 and KO-B48 groups, all mice developed detectable parasitemia within 3 days, which, however, rapidly disappeared. Two mice of the KO-B48 group suffered 1 or 3 subsequent relapses, otherwise, no parasitaemia was detectable in thick blood smears taken daily. No parasitaemia was observed at all in the KO-D6 group, and only one mouse in the KO-D48 group developed a brief, low parasitaemia on day 5. In contrast, the *tbat1*^{-/-} line appeared far more virulent. One group of mice was infected with *tbat1*^{-/-} cells from a long-term culture. All mice rapidly developed substantial parasitaemia, and two mice had to be euthanized. In the last group, infected with the same number of *tbat1*^{-/-} cells from stabilates kept in liquid nitrogen and only briefly brought back into culture, all mice developed massive parasitaemia and were euthanized (four on day 4, one on day 13). To investigate whether the lack of infectivity was innate to the adapted trypanosome lines or dependent on the immune system, groups of immunocompromised mice were infected. As shown in Fig. 10A, all mice infected with *tbat1*^{-/-} cells developed similar parasitaemia and were euthanized on day 7. In the KO-B48 and KO-D48 groups (Fig. 10, B and C), all mice similarly established substantial parasitaemia; in all but one mouse in the KO-B48 group, however, these were transient and the mice apparently self-cured.

An Arsenical-Resistant *T. brucei gambiense* Clone Has Lost TbAT1 and HAPT1. To assess whether loss of

HAPT1 activity is peculiar to selection with pentamidine, we also assessed [^3H]pentamidine transport in a *T. brucei gambiense* type 2 clone, 386Mr, adapted for high levels of melarsamine hydrochloride resistance in vivo (Scott et al., 1996). The [^3H]pentamidine transport profile of the parental line STIB 386Ms, conformed to the same three-transporter model as the earlier characterized *T. brucei brucei* s427 (De Koning, 2001b; Bray et al., 2003). Using fluorescence microscopy similar to the experiments shown here, it has previously been shown that 386Mr accumulates the diamidine DB99 much more slowly than the parental line (Stewart et al., 2005).

Figure 11A shows that uptake of 0.015 μM [^3H]pentamidine was inhibited partly by adenosine, with a K_i value of 1.8 μM , consistent with inhibition of TbAT1/P2. A second component, assessed in the presence of 1 mM adenosine, was revealed by a dose-dependent inhibition with propamidine, which inhibits HAPT1 but not LAPT1 (De Koning, 2001b), with a K_i value of $9.0 \pm 3.0 \mu\text{M}$ ($n = 3$). The third transport activity was evident as inhibited by high concentrations of unlabeled pentamidine but not by propamidine or adenosine, consistent with LAPT1 activity. In contrast to 386Ms, transport of [^3H]pentamidine in 386Mr was not sensitive to either adenosine or propamidine (Fig. 11B), showing the absence of TbAT1 and HAPT1 activity in these cells.

The K_m and V_{\max} values of HAPT1 and LAPT1 activities in the *T. brucei gambiense* lines are listed in Table 1 and are very similar to those determined in WT *T. brucei brucei*. Table 1 also shows that the V_{\max} of LAPT is not changed in the resistant *T. brucei gambiense* line, relative to its parental line.

TABLE 1
Kinetic parameters of pentamidine transporters in various cloned trypanosome lines

Trypanosome Species and Line	HAPT1			LAPT1	
	K_m	V_{\max}	Propamidine K_i	K_m	V_{\max}
	μM	$\text{pmol}/10^7 \text{ cells/s}$	μM	μM	$\text{pmol}/10^7 \text{ cells/s}$
<i>T. brucei brucei</i> s427 ^a	0.036 ± 0.006	0.0044 ± 0.0004	4.6 ± 0.7	56 ± 8	0.85 ± 0.15
<i>tbat1</i> ^{-/-} b	0.029 ± 0.008		13 ± 3	50 ± 17	
KO-B48	N.D.	N.D.	N.D.	56 ± 7	0.82 ± 0.20
<i>T. brucei gambiense</i> 386Ms	0.038 ± 0.004	0.0022 ± 0.0008	9.0 ± 3.0	113 ± 18	2.2 ± 0.7
386Mr	N.D.	N.D.	N.D.	68 ± 14	2.4 ± 0.1

N.D., not detectable.

^a Values from De Koning, 2001b.

^b IC₅₀ values from Matovu et al., 2003.

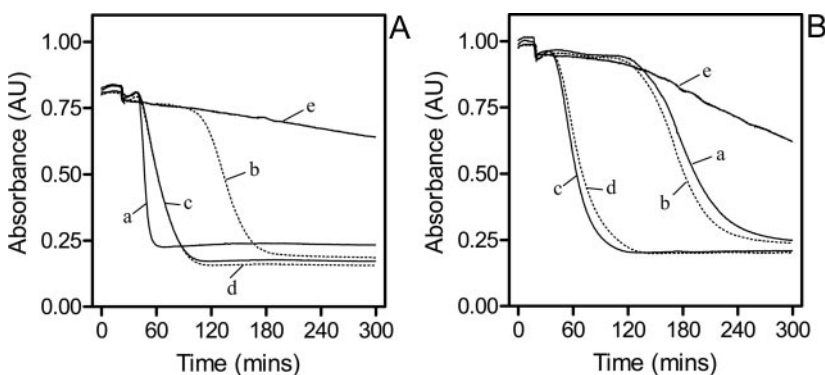


Fig. 6. Lysis of trypanosomes induced by 10 μM melarsen oxide. A, strain *tbat1*^{-/-}. B, strain KO-B48. Melarsen oxide (10 μM) was added after 15 min of recording, as 50 μl [200 μM] in full HMI-9 medium added to 1×10^7 (A) or 1.5×10^7 *T. brucei brucei* in 1 ml of full HMI-9 medium being monitored at 750 nm. Conditions from $t = 0$ min: a, 10 μM melarsen oxide; b, 10 μM melarsen oxide plus 1 μM pentamidine; c, 0.5 μM phenylarsine oxide; d, 0.5 μM phenylarsine oxide plus 1 μM pentamidine. Dotted lines indicate the incubations in the presence of 1 μM pentamidine.

Discussion

In principle, pentamidine resistance in African trypanosomes could be associated with changes in the intracellular drug target, with reduced uptake of the drug or with active extrusion from the cell by an ABC-type efflux pump.

It has been shown that, in wild-type *T. brucei brucei*, pentamidine uptake is very rapid and efficient, amounting to a cytosolic concentration corresponding to at least 1 mM, if the drug were to remain unbound (Damper and Patton, 1976). Such an intracellular accumulation of the drug is liable to interfere with multiple vital processes and it has long been hypothesized that resistance would most likely be associated with a reduction in cellular levels (Wang, 1995). Indeed, different authors (Wang, 1995) have demonstrated various effects of pentamidine on cellular processes. Pentamidine resistance in *T. brucei brucei* based on acquired mutations in any one target, while impossible to rule out, would thus seem unlikely.

Another potential route to drug resistance is the expression of ABC transporters capable of actively removing the toxic compound from the cell. Strong evidence couples this mechanism to drug resistance in some protozoa, including *Plasmodium* and *Leishmania* spp. and *Entamoeba histolytica* (Légare et al., 2001; Lopez-Camarillo et al., 2003). In *T. brucei*, three ABC transporter genes have been identified (Mäser and Kaminsky, 1998). However, in studies with the P-glycoprotein inhibitor verapamil, no evidence could be found for the involvement of such transporters in multi-drug resistance in *T. brucei brucei*, either in vitro or in vivo (Kaminsky and Zweggarth, 1991). Experimental overexpression of the *T. brucei brucei* ABC transporter TbMRPA

led to substantial melarsoprol resistance in vitro (Shahi et al., 2002) but not in vivo, and TbMRPA overexpression was not observed in melarsoprol-resistant clinical isolates from a number of patients with sleeping sickness (Alibu et al., 2006).

Thus, although resistance based on target modifications or active efflux cannot be excluded, the available information is consistent with changes to drug entry being the cause of arsenical and diamidine resistance in African trypanosomes. Our findings, using pentamidine-adapted laboratory strains,

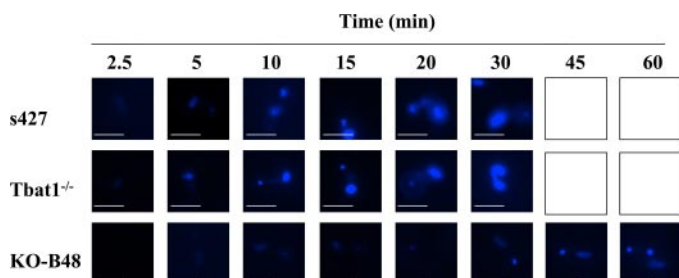


Fig. 7. Assessment of DAPI uptake using fluorescent microscopy over time. LS bloodstream forms of WT s427, *tbat1*^{-/-} and KO-B48 were incubated with 10 μ M DAPI and fluorescence was observed under an Axioplan 2 imaging microscope (λ_{ex} = 365 nm, λ_{em} = 445 nm) at 1000 \times magnification.

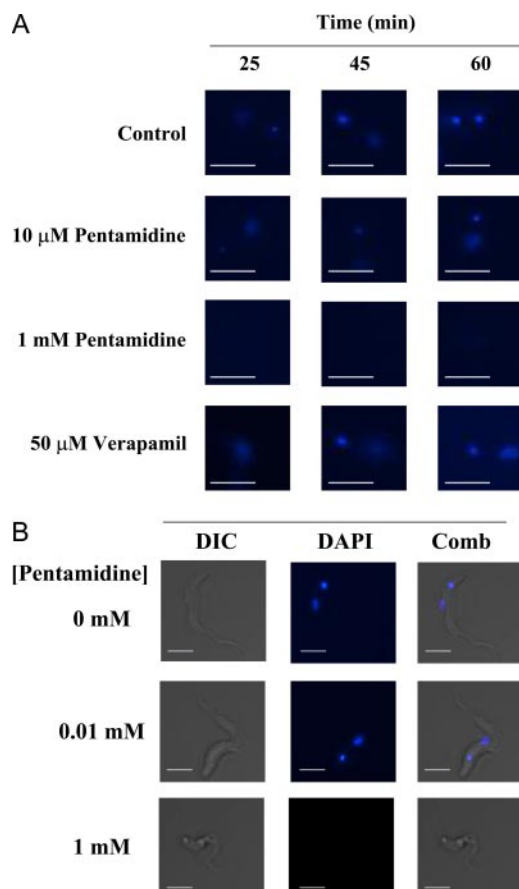


Fig. 8. DAPI fluorescence acquisition in live KO-B48 cells incubated in the absence or presence of a low (10 μ M) or high (1 mM) concentration of pentamidine, or 50 μ M verapamil over time (A). Separate images (DIC, DAPI, and combined overlay) from glutaraldehyde-fixed parasites after 60-min incubation with DAPI in the presence or absence of pentamidine (B). DAPI concentration was 10 μ M. Magnification was 1000 \times . Comb, combined overlay.

are strongly in agreement with this hypothesis. We identify HAPT1 as potentially a key drug resistance determinant and for the first time provide a biochemical model for high-level arsenical-diamidine cross-resistance in African trypanosomes.

High-Level Pentamidine Resistance Is Associated with Loss of HAPT1 but Not of LAPT1 Activity. Several independent lines of evidence suggested that the pentamidine-adapted lines KO-B48 and KO-D48 had lost HAPT1 rather than LAPT1 activity. Because the adaptation started with the *tbat1*^{-/-} clonal line, P2 transport activity was also not present. We have shown previously that propamidine is an inhibitor of high-affinity pentamidine transport in *T. brucei* but not of the low-affinity transport component (De Koning, 2001b), and the increase in propamidine resistance is certainly consistent with loss of HAPT1 activity. Furthermore, there was no increased resistance to diminazene aceturate, which is transported only by TbAT1/P2 (De Koning et al., 2004), or to phenylarsine oxide, which diffuses across membranes.

The resistance profiles and [³H]pentamidine transport rates of the two adapted lines were highly similar. These experiments measured initial rates of pentamidine uptake rather than accumulation, and the results can only be explained in terms of deficient uptake rather than active extrusion or intracellular sequestration. Unlike *T. brucei brucei* s427 and *tbat1*^{-/-} (De Koning, 2001b; Matovu et al., 2003), transport of 15 nM [³H]pentamidine in KO-B48 was not inhibited by submicromolar concentrations of unlabeled pentamidine, saturated only by very high levels of the substrate, and K_m and V_{max} values were identical to those reported earlier for LAPT1 (De Koning, 2001b).

In *tbat1*^{-/-}, lysis induced by melarsen oxide was very considerably delayed, relative to *T. brucei brucei* s427, by coadministration of as little as 1 μ M pentamidine—sufficient to saturate HAPT1 but not LAPT1. Pentamidine was apparently competing with the arsenical drug for transporter-mediated import, because 1 μ M of pentamidine had no effect on the rapid lysis induced by phenylarsine oxide. These experiments clearly demonstrate the uptake of melarsen oxide through HAPT1. The same process was assessed by monitor-

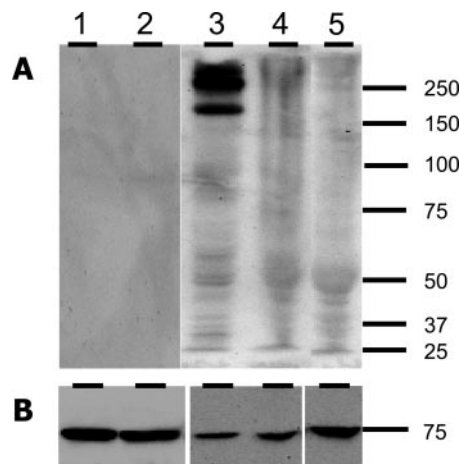


Fig. 9. TbMRPA expression in various *Trypanosoma brucei* lines. Western blots with extracts of *tbat1*^{-/-} (lane 1), KO-B48 (lane 2), NY-mrpa+ (lane 3), NY-mrpa- (lane 4), and NY (lane 5), using anti-TbMRPA (A) or PFR antisera (B).

ing DAPI fluorescence as a marker for diamidine accumulation. Scant difference was observed between the WT and *tbat1*^{-/-} lines, but the development of fluorescence was substantially delayed in KO-B48 cells (Fig. 7), indicating a loss of diamidine transport unrelated to TbAT1/P2. The remaining DAPI transport activity was saturated by 1 mM but not by 10 μ M pentamidine, consistent with uptake through LAPT1 rather than HAPT1.

The Role of HAPT1 in Accumulation of Melaminophenyl Arsenicals. Since the seminal observations of Carter and Fairlamb (1993) that a *T. brucei brucei* line adapted to high levels of resistance to melaminophenyl arsenicals had lost activity of a transporter they named P2, much evidence has accumulated linking TbAT1/P2 to arsenical resistance (Carter et al., 1999; Delespau and De Koning, 2006). Loss of P2 activity alone was not sufficient to establish substantial arsenical resistance as the *tbat1*^{-/-} line was less than 3-fold resistant to melarsen oxide and melarsoprol (Matovu et al., 2003). We show here that lysis of trypanosomes induced by melaminophenyl arsenicals, but not by phenylarsine oxide, was 1) sensitive to inhibition by 1 μ M pentamidine and 2) much delayed in KO-B48 cells. The level of resistance to melarsen oxide reached 15-fold in KO-B48. We conclude that high levels of arsenical resistance can be induced by selection with pentamidine and can be achieved by the sequential loss of TbAT1 and HAPT1. The example with *T. brucei gambiense* 386Mr shows that selection with melaminophenyl arsenicals can likewise lead to loss of the same two transporters,

thus explaining reported incidences of pentamidine/arsenical cross-resistance (Frommel and Balber, 1987; Kaminsky and Mäser, 2000). High levels of resistance could be far more easily induced when starting from a TbAT1-null background. This is potentially significant given the increasing levels of resistance to melarsoprol and diminazene aceturate in the field, believed to be at least partially linked to loss of TbAT1/P2 activity in the resistant strains (Kaminsky and Mäser, 2000; De Koning et al., 2004; Delespau and De Koning, 2006).

It must be acknowledged that our findings have been generated under laboratory conditions and that any clinical link between loss of HAPT and diamidine or melarsoprol treatment failure remains theoretical. However, the previous explanation for the observed treatment failures (loss of TbAT1/P2 only) proved unsatisfactory (Matovu et al., 2003), and we here propose an improved model that can now be tested against the situation in the field. Efforts to identify the genes encoding HAPT and LAPT are ongoing and would greatly assist the evaluation of this model against clinical isolates.

It is possible that additional mechanisms of resistance to melaminophenyl arsenicals may exist, because cross-resistance is not always observed (e.g., Fairlamb et al., 1992). However, conclusions based on a review of the literature are complicated by differences in technique (e.g., in vitro or in vivo assessment of resistance), variations in drugs tested, and other confounding factors.

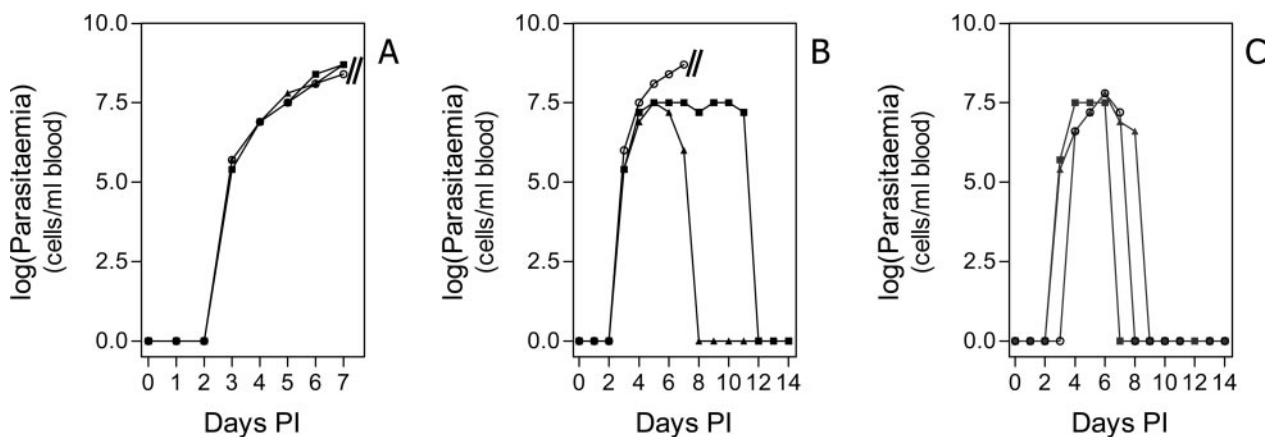


Fig. 10. Parasitaemia in *T. brucei brucei* infected mice. Progression of *T. brucei brucei* infections in immunocompromised mice after intraperitoneal inoculation with equal numbers of *tbat1*^{-/-} (A), KO-B48 (B), and KO-D48 (C). Animals reaching a parasite burden of 10⁸ or more were euthanized, indicated with a double bar. Each group consisted of three mice, represented by symbols ■, ▲, and ○. PI, postinfection.

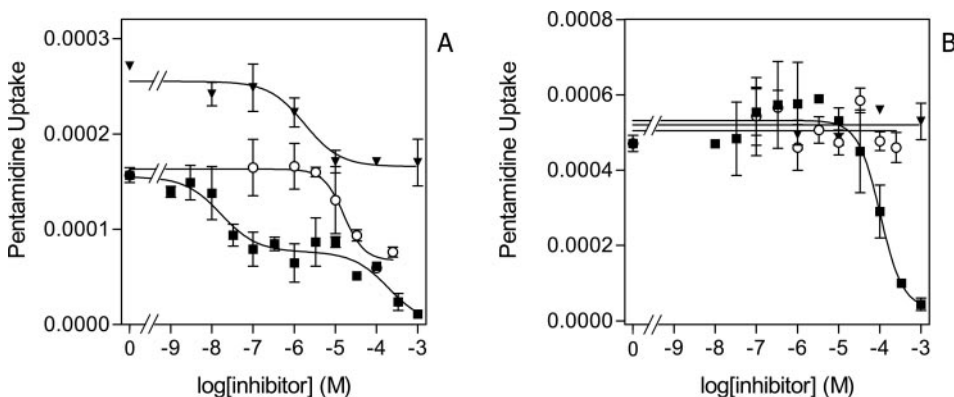


Fig. 11. Transport of 0.015 μ M [³H]pentamidine in *T. brucei gambiense* 386Ms (A) and 386Mr. Uptake was measured over 60 s in the presence or absence of adenosine (▼), propamidine (○), or unlabeled pentamidine (■). Incubations with propamidine or pentamidine were performed in the presence of 1 mM adenosine to saturate the TbAT1/P2 transporter. Data shown are the average of triplicate determinations; error bars are S.E. Pentamidine uptake is expressed as picomoles per 10⁷ cells per second.

The Role of Drug Efflux: ABC Transporters. It has been demonstrated that overexpression of the *T. brucei brucei* ABC transporter MRPA resulted in a 10-fold resistance to melarsoprol in vitro (Shahi et al., 2002), an effect that was additive with the effect of *TbaT1* deletion (Lüscher et al., 2006). However, we found no detectable levels of TbMRPA in the two pentamidine-adapted lines. In addition, we found that the P-glycoprotein inhibitor verapamil had no effect on DAPI accumulation, and thus we have been unable to find evidence that the increased resistance phenotype is the result of increased activity of P-glycoprotein or mdr-type ABC-transporters.

Is Pentamidine Resistance Associated with Reduced Virulence? Pentamidine is still the first-line drug for early-stage gambiense sleeping sickness. Treatment failures are rare but stable over at least three decades (Pépin and Milord, 1994). In contrast, pentamidine resistance seems to emerge easily in *Leishmania* species (Papadopolou et al., 1998), though pentamidine usage against leishmaniasis has been very much less widespread than against African trypanosomiasis. The difference can be explained in part by the involvement of an mdr-type ABC transporter in pentamidine efflux from *Leishmania* (Coelho et al., 2003) and the fact that pentamidine uptake in *Leishmania* is apparently mediated by a single transporter (Basselin et al., 2002; Bray et al., 2003). The presence of three pentamidine transporters in *T. brucei brucei* has been argued to be responsible for the lack of clinical resistance to pentamidine (Bray et al., 2003). However, it has been demonstrated that trypanosomes with defective *tbaT1* genes can be isolated from sleeping sickness patients (Matovu et al., 2001), and we show here that the further loss of just HAPT1 leads to very significant levels of pentamidine resistance. The presence of multiple accumulation routes alone may thus not be sufficient to prevent the occurrence of resistance. One explanation would be loss of viability or virulence in the resistant parasites. Berger et al. (1995) reported that pentamidine adapted *T. brucei brucei* clone PR32.6 was far less virulent than the parental strain and excluded increased susceptibility to the host's immune system or changes attributable to prolonged culturing as factors. The phenotype of the KO-B48 and KO-D48 lines seems identical to that of PR32.6. These lines were less infective in mice and rats than the parental line, which had been cultured at least equally long, and immunosuppression of the animals did not lead to substantially higher parasitaemia. There is thus a distinct possibility that high-level pentamidine resistance is not viable in the field, and self-limiting.

Acknowledgments

We are grateful to Professor Mike Turner for the use of *T. brucei gambiense* strains 386Ms and 386Mr and to Professor Christine Clayton for the gift of anti-TbMRPA antiserum. We are particularly grateful to Professor Paul Voorheis (University of Dublin) for expert advice and assistance on the preparation of plasma membrane protein-enriched fractions for Western blotting.

References

- Alibu VP, Richter C, Voncken F, Marti G, Shahi S, Renggli CK, Seebeck T, Brun R, and Clayton C (2006) The role of *Trypanosoma brucei* MRPA in melarsoprol susceptibility. *Mol Biochem Parasitol* **146**:38–44.
- Basselin M, Denise H, Coombs GH, and Barrett MP (2002) Resistance to pentamidine in *Leishmania mexicana* involves exclusion of the drug from the mitochondrion. *Antimicrob Agents Chemother* **46**:3731–3738.

- Berger BJ, Carter NS, and Fairlamb AH (1995) Characterisation of pentamidine-resistant *Trypanosoma brucei brucei*. *Mol Biochem Parasitol* **69**:289–298.
- Bray PG, Barrett MP, Ward SA, and De Koning HP (2003) Pentamidine uptake and resistance in pathogenic protozoa: past, present and future. *Trends Parasitol* **19**:232–239.
- Carter NS, Barrett MP, and De Koning HP (1999) A drug resistance determinant in *Trypanosoma brucei*. *Trends Microbiol* **7**:469–471.
- Carter NS and Fairlamb AH (1993) Arsenical-resistant trypanosomes lack an unusual adenosine transporter. *Nature (Lond)* **361**:173–176.
- Coelho AC, Beverley SM, and Cotrim PC (2003) Functional genetic identification of PRP1, an ABC transporter superfamily member conferring pentamidine resistance in *Leishmania major*. *Mol Biochem Parasitol* **130**:83–90.
- Damper D and Patton CL (1976) Pentamidine transport and sensitivity in *brucei*-group trypanosomes. *J Protozool* **23**:349–356.
- De Koning HP (2001a) Transporters in African trypanosomes: role in drug action and resistance. *Int J Parasitol* **31**:512–522.
- De Koning HP (2001b) Uptake of pentamidine in *Trypanosoma brucei brucei* is mediated by three distinct transporters: implications for cross-resistance with arsenicals. *Mol Pharmacol* **59**:586–592.
- De Koning HP, Anderson LF, Stewart M, Burchmore RJ, Wallace LJ, and Barrett MP (2004) The trypanocide diminazene aceturate is accumulated predominantly through the TbAT1 purine transporter: additional insights on diamidine resistance in African trypanosomes. *Antimicrob Agents Chemother* **48**:1515–1519.
- De Koning HP and Jarvis SM (1997) Purine nucleobase transport in bloodstream forms of *Trypanosoma brucei* is mediated by two novel transporters. *Mol Biochem Parasitol* **89**:245–258.
- De Koning HP and Jarvis SM (2001) Uptake of pentamidine in *Trypanosoma brucei brucei* is mediated by the P2 adenosine transporter and at least one novel, unrelated transporter. *Acta Trop* **80**:245–250.
- Delespaulx V and De Koning HP (2007) Drugs and drug resistance in African trypanosomiasis. *Drug Resist Updat*, in press.
- Fairlamb AH, Carter NS, Cunningham M, and Smith K (1992) Characterisation of melarsen-resistant *Trypanosoma brucei brucei* with respect to cross-resistance to other drugs and trypanothione metabolism. *Mol Biochem Parasitol* **53**:213–222.
- Frommel TO and Balber AE (1987) Flow cytofluorimetric analysis of drug accumulation by multidrug-resistant *Trypanosoma brucei brucei* and *T. b. rhodesiense*. *Mol Biochem Parasitol* **26**:183–191.
- Fulton JD and Grant PT (1955) The preparation of a strain of *Trypanosoma rhodesiense* resistant to stilbamidine and some observations on its nature. *Exp Parasitol* **4**:377–386.
- Herbert WJ and Lumsden WH (1976) *Trypanosoma brucei*: a rapid “matching” method for estimating the host's parasitemia. *Exp Parasitol* **40**:427–431.
- Hirumi H and Hirumi K (1989) Continuous cultivation of *Trypanosoma brucei* blood stream forms in a medium containing a low concentration of serum protein without feeder cells. *J Parasitol* **75**:985–989.
- Jannin J and Cattand P (2004) Treatment and control of human African trypanosomiasis. *Curr Opin Infect Dis* **17**:565–571.
- Kaminsky R and Mäser P (2000) Drug resistance in African trypanosomes. *Curr Opin Anti-infect Investig Drugs* **2**:76–82.
- Kaminsky R and Zweygath E (1991) The effect of verapamil alone and in combination with trypanocides on multidrug-resistant *Trypanosoma brucei brucei*. *Acta Trop* **49**:215–225.
- Légaré D, Cayer S, Singh AK, Richard D, Papadopolou B, and Ouellette M (2001) ABC proteins of *Leishmania*. *J Bioenerg Biomembr* **33**:469–474.
- Lopez-Camarillo C, Luna-Arias JP, Marchat LA, and Orozco E (2003) EhPgp5 mRNA stability is a regulatory event in the *Entamoeba histolytica* multidrug resistance phenotype. *J Biol Chem* **278**:11273–11280.
- Lüscher A, Nerima B, and Mäser P (2006) Combined contribution of TbAT1 and TbMRPA to drug resistance in *Trypanosoma brucei*. *Mol Biochem Parasitol* **150**:364–366.
- Mäser P and Kaminsky R (1998) Identification of three ABC transporter genes in *Trypanosoma brucei* spp. *Parasitol Res* **84**:106–111.
- Mäser P, Sutterlin C, Kralli A, and Kaminsky R (1999) A nucleoside transporter from *Trypanosoma brucei* involved in drug resistance. *Science (Wash DC)* **285**:242–244.
- Matovu E, Geiser F, Schneider V, Mäser P, Enyaru JC, Kaminsky R, Gallati S, and Seebeck T (2001) Genetic variants of the TbAT1 adenosine transporter from African trypanosomes in relapse infections following melarsoprol therapy. *Mol Biochem Parasitol* **117**:73–81.
- Matovu E, Stewart ML, Geiser F, Brun R, Mäser P, Wallace LJ, Burchmore RJ, Enyaru JC, Barrett MP, Kaminsky R, et al. (2003) Mechanisms of Arsenical and Diamidine Uptake and Resistance in *Trypanosoma brucei*. *Eukaryot Cell* **2**:1003–1008.
- Papadopolou B, Kundig C, Singh A, and Ouellette M (1998) Drug resistance in *Leishmania*: similarities and differences to other organisms. *Drug Resist Updat* **1**:266–278.
- Pépin J and Milord F (1994) The treatment of human African trypanosomiasis. *Adv Parasitol* **33**:1–47.
- Räz B, Iten M, Grether-Bühler Y, Kaminsky R, and Brun R (1997) The Alamar Blue assay to determine drug sensitivity of African trypanosomes (*T. b. rhodesiense* and *T. b. gambiense*) in vitro. *Acta Trop* **68**:139–147.
- Schlaeppli K, Deflorin J, and Seebeck T (1989) The major component of the paraflagellar rod of *Trypanosoma brucei* is a helical protein that is encoded by two identical, tandemly linked genes. *J Cell Biol* **109**:1695–1709.
- Scott AG, Tait A, and Turner CM (1996) Characterisation of cloned lines of *Trypanosoma brucei* expressing stable resistance to MelCy and suramin. *Acta Trop* **60**:251–262.
- Shahi SK, Krauth-Siegel RL, and Clayton CE (2002) Overexpression of the putative thiol conjugate transporter TbMRPA causes melarsoprol resistance in *Trypanosoma brucei*. *Mol Microbiol* **43**:1129–1138.
- Stewart ML, Krishna S, Burchmore RJ, Brun R, De Koning HP, Boykin DW, Tidwell

- RR, Hall JE, and Barrett MP (2005) Detection of arsenical drug resistance in *Trypanosoma brucei* with a simple fluorescence test. *Lancet* **366**:486–487.
- Voorheis HP, Gale JS, Owen MJ, and Edwards W (1979) The isolation and partial characterization of the plasma membrane from *Trypanosoma brucei*. *Biochem J* **180**:11–24.
- Wallace LJ, Candlish D, and De Koning HP (2002) Different substrate recognition motifs of human and trypanosome nucleobase transporters. Selective uptake of purine antimetabolites. *J Biol Chem* **277**:26149–26156.
- Wang CC (1995) Molecular mechanisms and therapeutic approaches to the treatment of African trypanosomiasis. *Annu Rev Pharmacol Toxicol* **35**:93–127.
- Williamson J (1970) Review of chemotherapeutic and chemoprophylactic agents, in *The African Trypanosomiases* (Mulligan HW ed) pp 125–221, Allen and Unwin, London.

- Williamson J and Rollo IM (1959) Drug resistance in trypanosomes: cross-resistance analyses. *Br J Pharmacol Chemother* **14**:423–430.
- Wirtz E, Leal S, Ochatt C, and Cross GA (1999) A tightly regulated inducible expression system for conditional gene knock-outs and dominant-negative genetics in *Trypanosoma brucei*. *Mol Biochem Parasitol* **99**:89–101.
- Witola WH, Inoue N, Ohashi K, and Onuma M (2004) RNA-interference silencing of the adenosine transporter-1 gene in *Trypanosoma evansi* confers resistance to diminazene aceturate. *Exp Parasitol* **107**:47–57.

Address correspondence to: Dr. Harry P. de Koning, Institute of Biomedical and Life Sciences, Glasgow Biomedical Research Centre, University of Glasgow, Glasgow G12 8TA, United Kingdom. E-mail: h.de-koning@bio.gla.ac.uk
